

# How to import files

Adobe Premiere Pro works with a wide variety of assets: video, audio, graphics and still images. Adobe Premiere Pro does not actually move the files into the project folder; it simply creates links to them in the Project panel. You can link to files in multiple file folders. If you later remove certain assets from your project—by deleting their links—you do not remove the original files from your computer. Adobe Premiere Pro is a nondestructive, nonlinear editor.

## Importing video, audio, and image files

To use assets in a project, you must first import them.

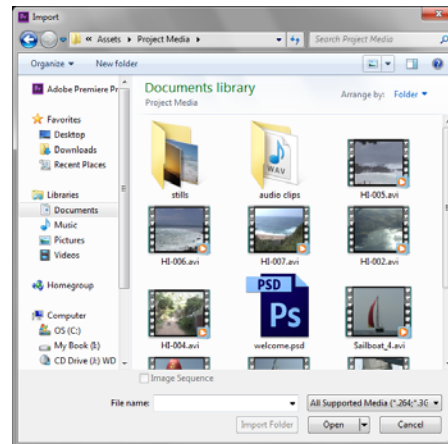
To import a video, audio, or image file:

1. Start Adobe Premiere Pro and start a new project.
2. Select File > Import.

The Import dialog box appears (**Figure 1**).

3. Navigate to a file folder with some assets; select several video, audio, and image files; and click Open (Windows) or Import (Mac OS).

**Note:** You can select a group of contiguous files by using the Shift-click method (click a clip and Shift-click the last clip in a group). If you want to select all but a few files, select a group and then Ctrl-click (Windows) or Command-click (Mac OS) individual clips to deselect them one at a time.



**Figure 1** Import dialog box

## Importing Adobe Photoshop files

When you import an Adobe Photoshop file, you have several options unique to Photoshop files. You can import the layers as single layers or as separate graphics within a sequence, or you can merge the entire file into one graphic clip.

To insert an Adobe Photoshop file:

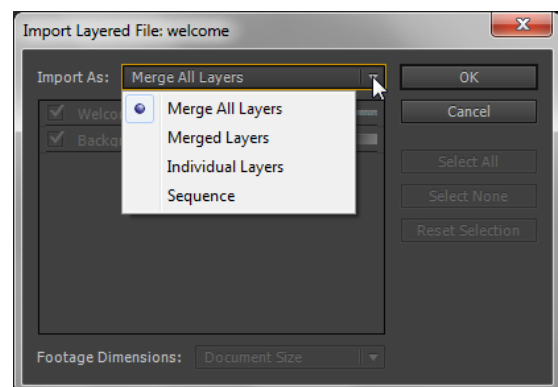
1. Select File > Import.
2. Navigate to a folder with a layered Photoshop PSD file in it, select the file, and click Open (Windows) or Import (Mac OS).

The Import Layered File dialog box appears (**Figure 2**).

3. In the Import As menu, select Sequence and click OK.

A bin is added to your Project panel with all the Photoshop layers listed as separate clips. A new sequence is created with the layers on separate video tracks.

**Note:** Selecting Merged Layers lets you select which layers to merge and which to leave separate. Selecting Individual Layers adds each layer as a single graphic, but does not place the layers into a new sequence.



**Figure 2** Import Layered File dialog box